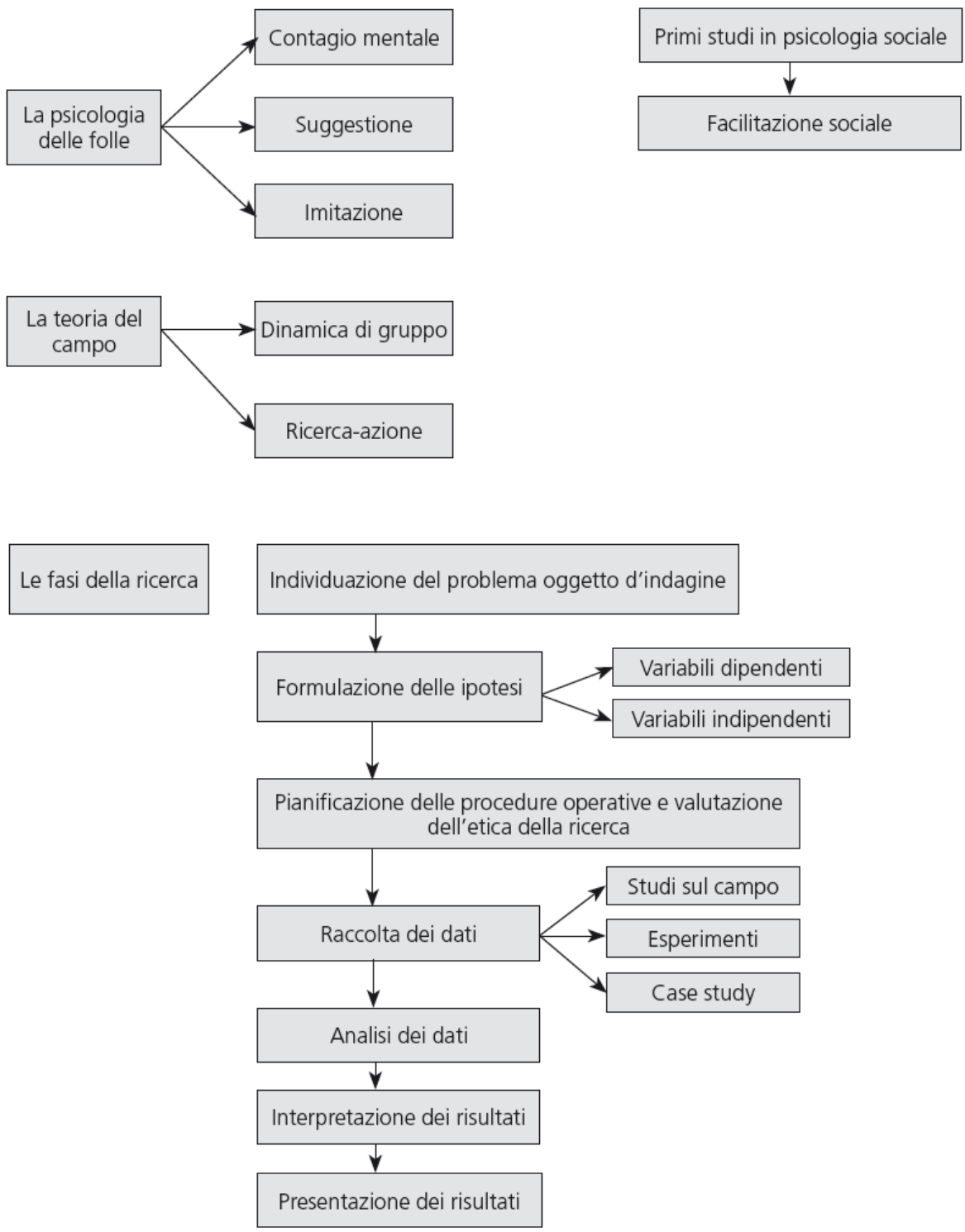


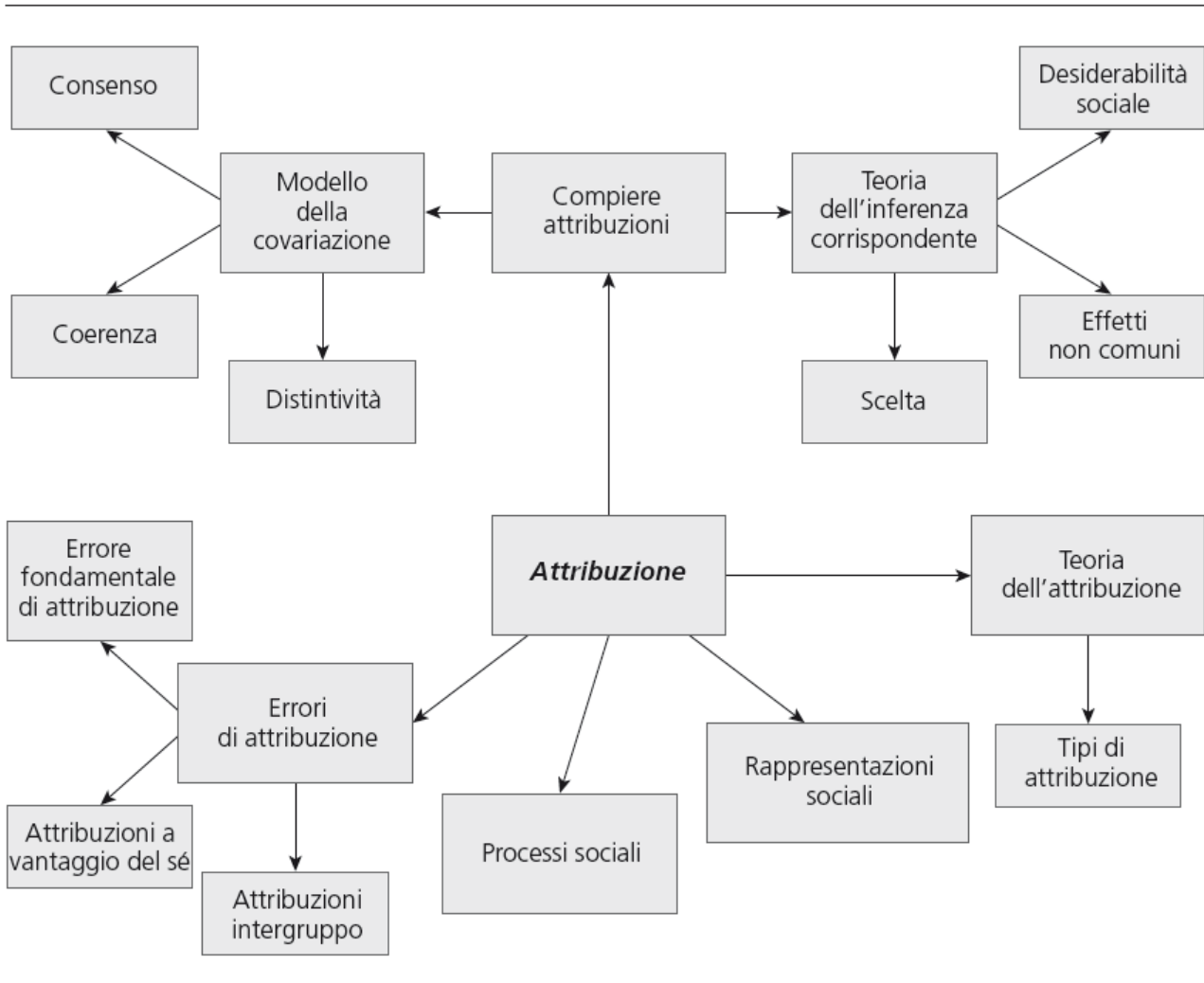
# CAPITOLO 1 – UNA BREVE INTRODUZIONE

## MAPPA MENTALE

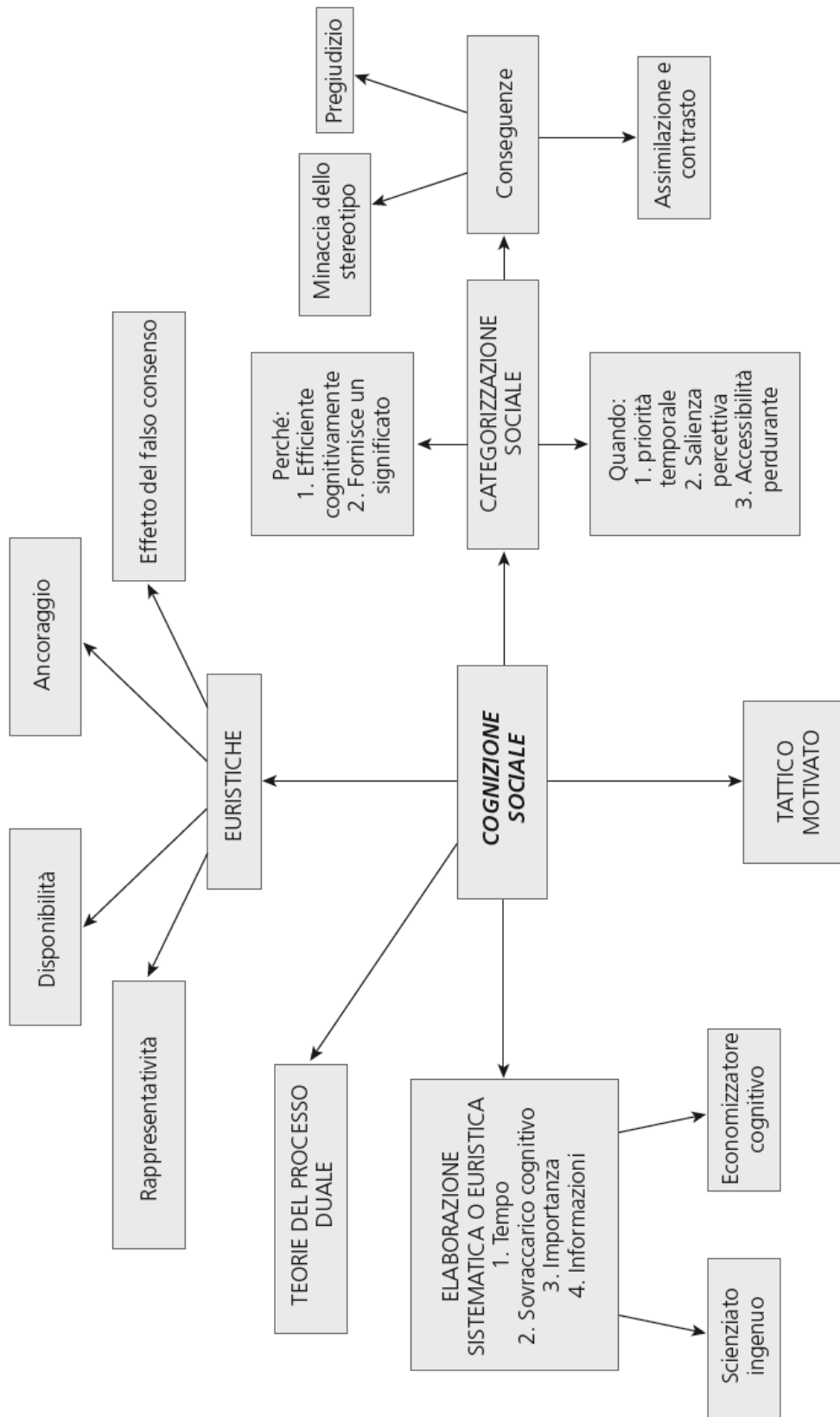


## CAPITOLO 2 – L'ATTRIBUZIONE

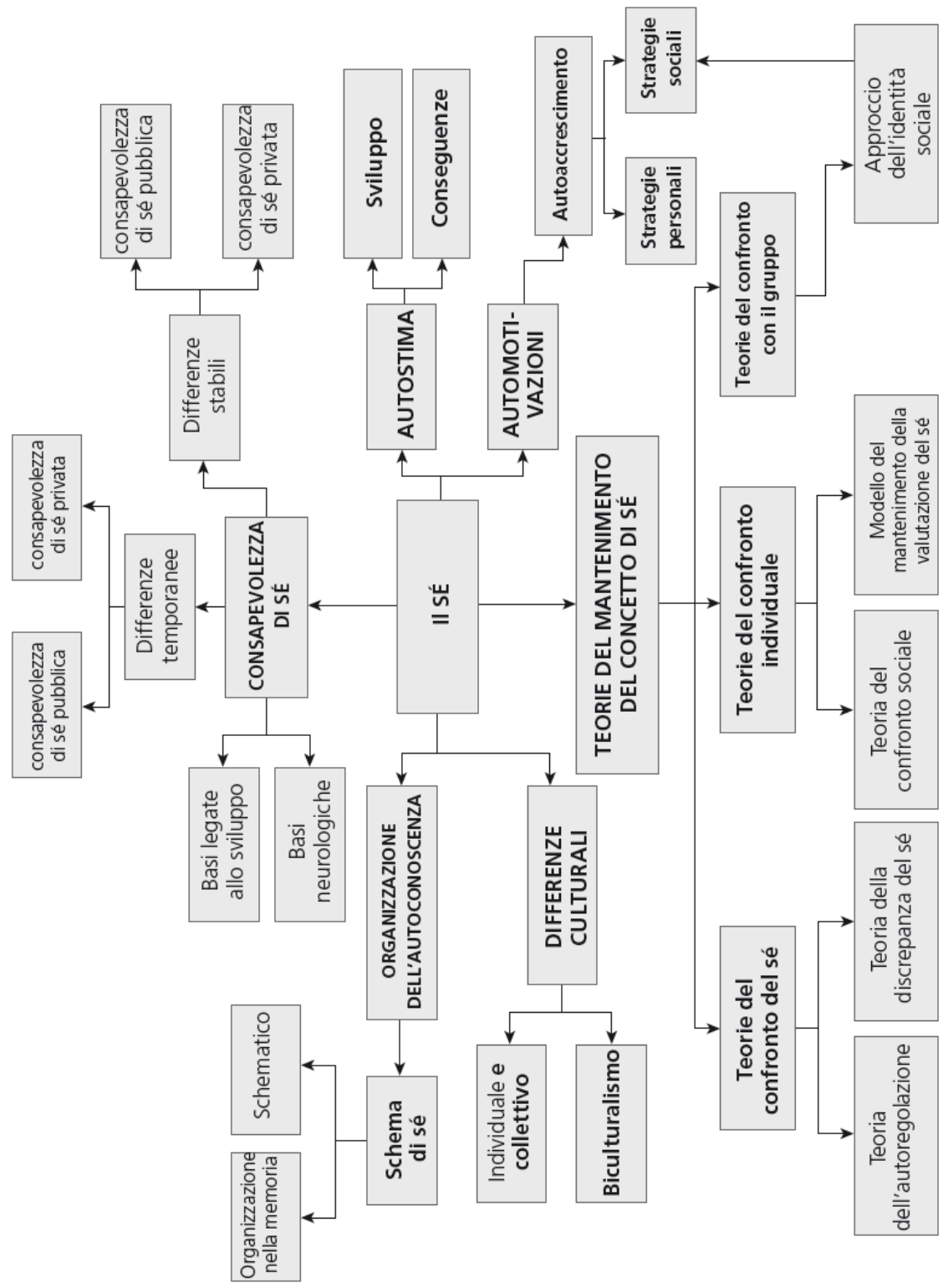
### MAPPA MENTALE



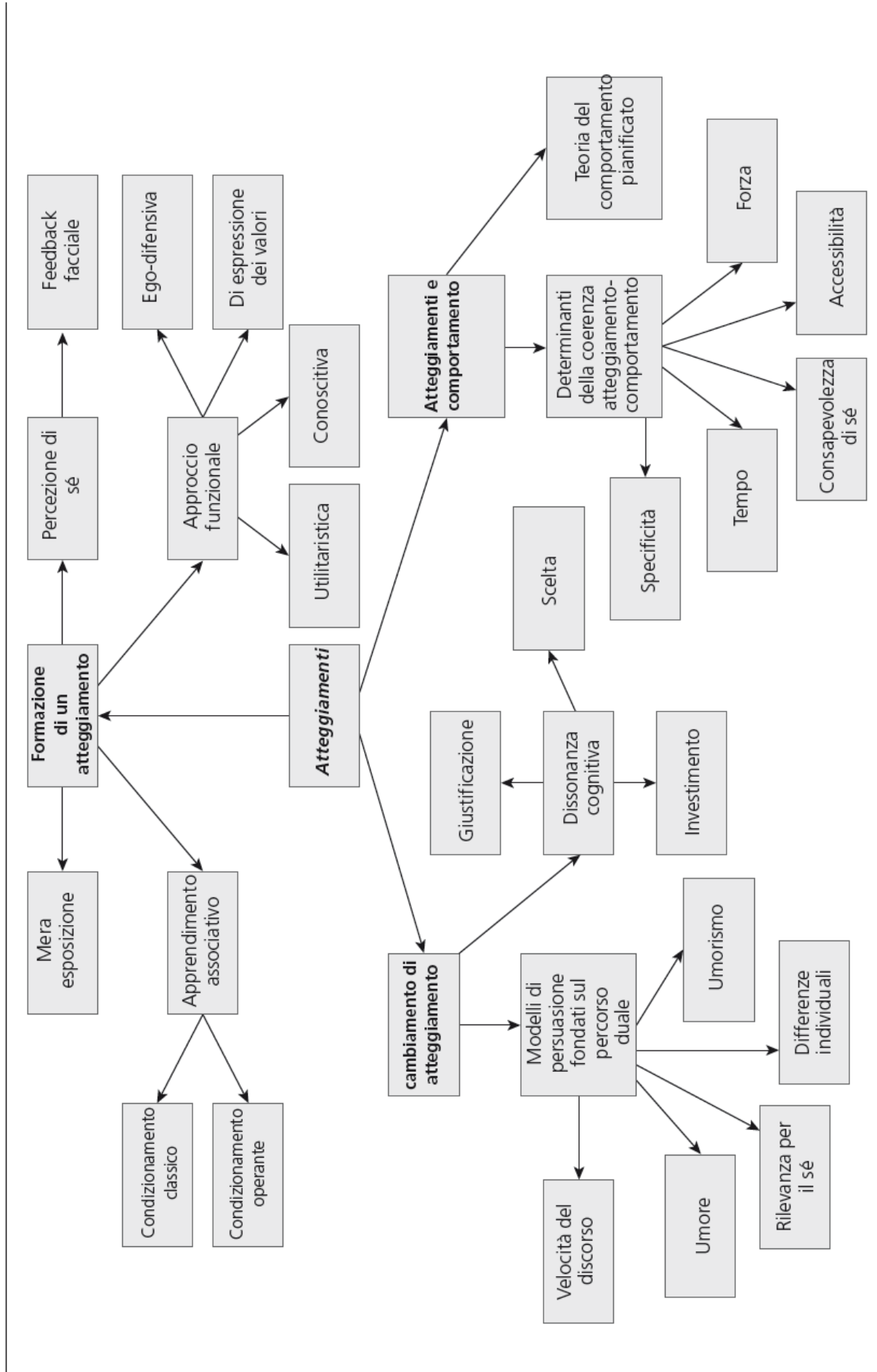
CAPITOLO 3 – LA COGNIZIONE SOCIALE  
MAPPA MENTALE



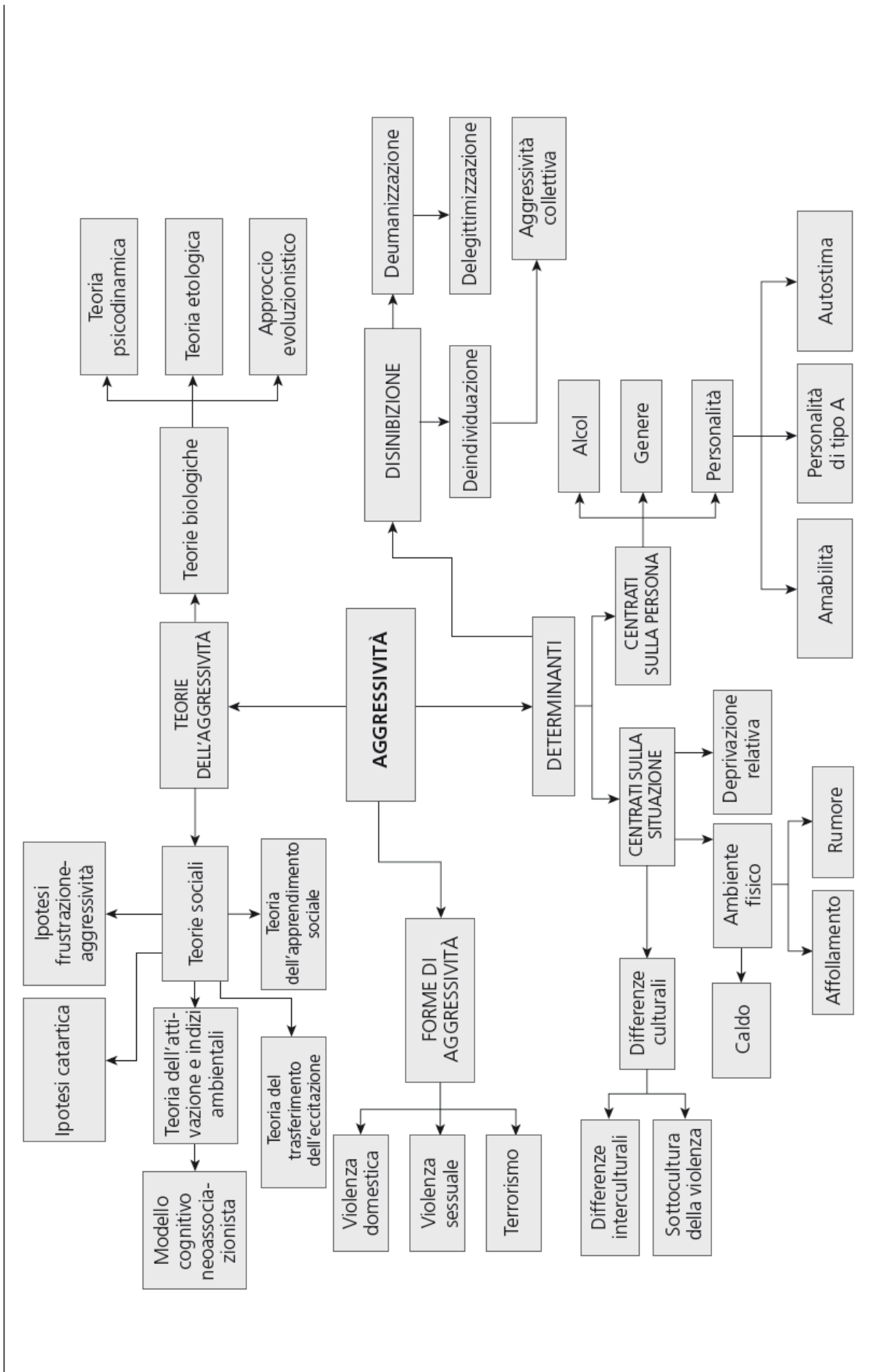
CAPITOLO 4 – IL SÉ  
MAPPA MENTALE



CAPITOLO 5 – GLI ATTEGGIAMENTI  
MAPPA MENTALE

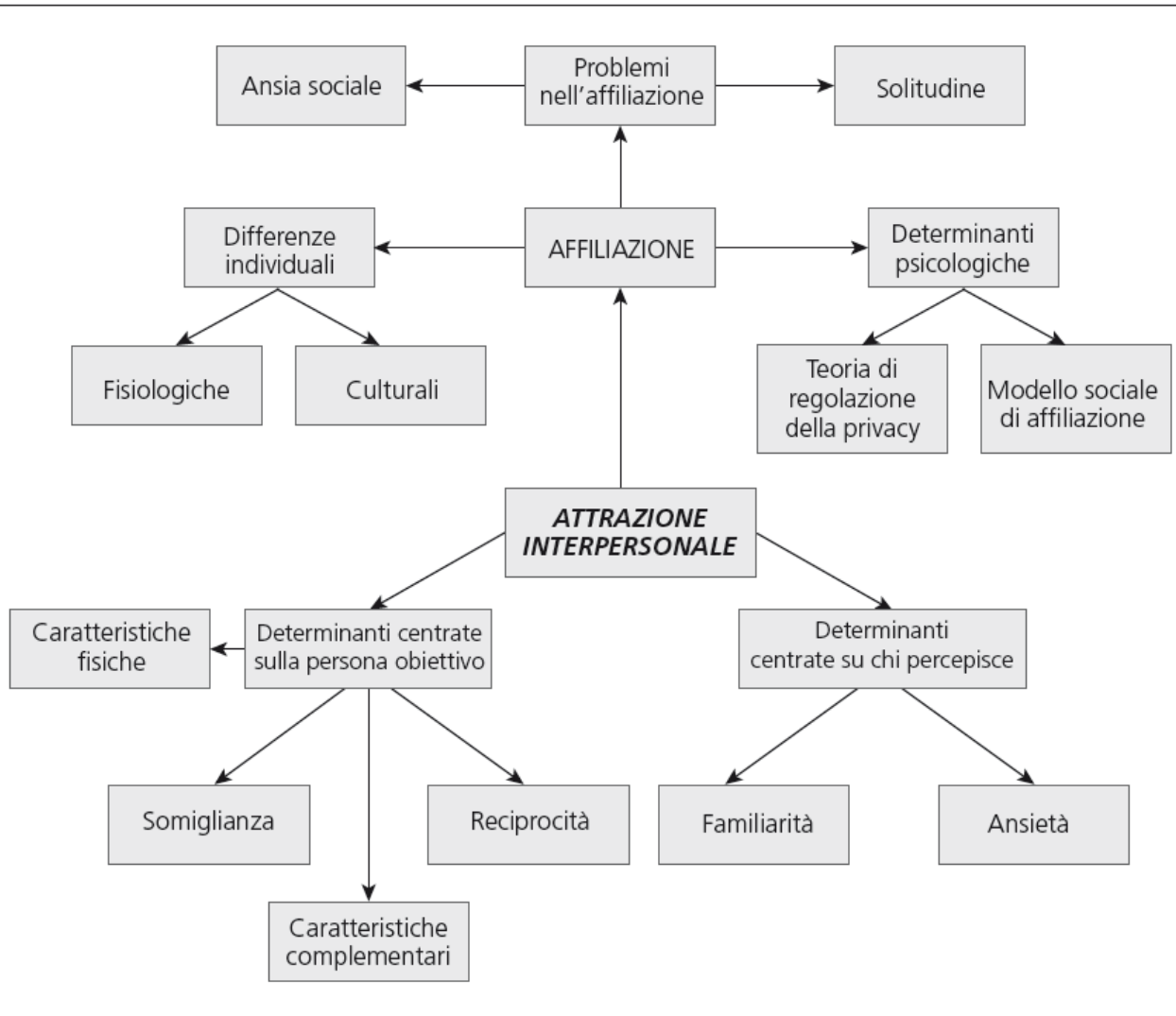


CAPITOLO 6 – L'AGGRESSIVITÀ  
MAPPA MENTALE



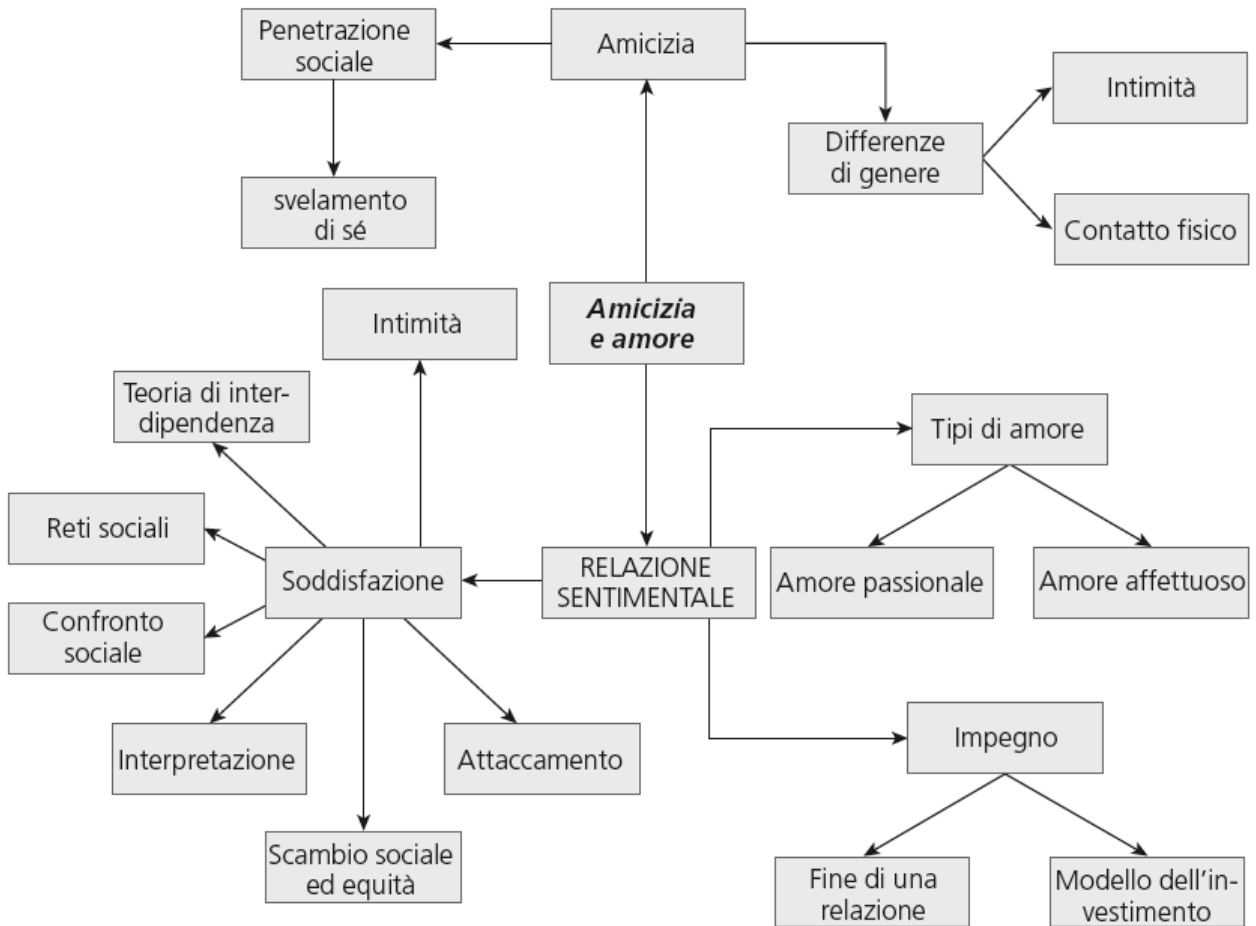


CAPITOLO 8 – AFFILIAZIONE E ATTRAZIONE  
MAPPA MENTALE

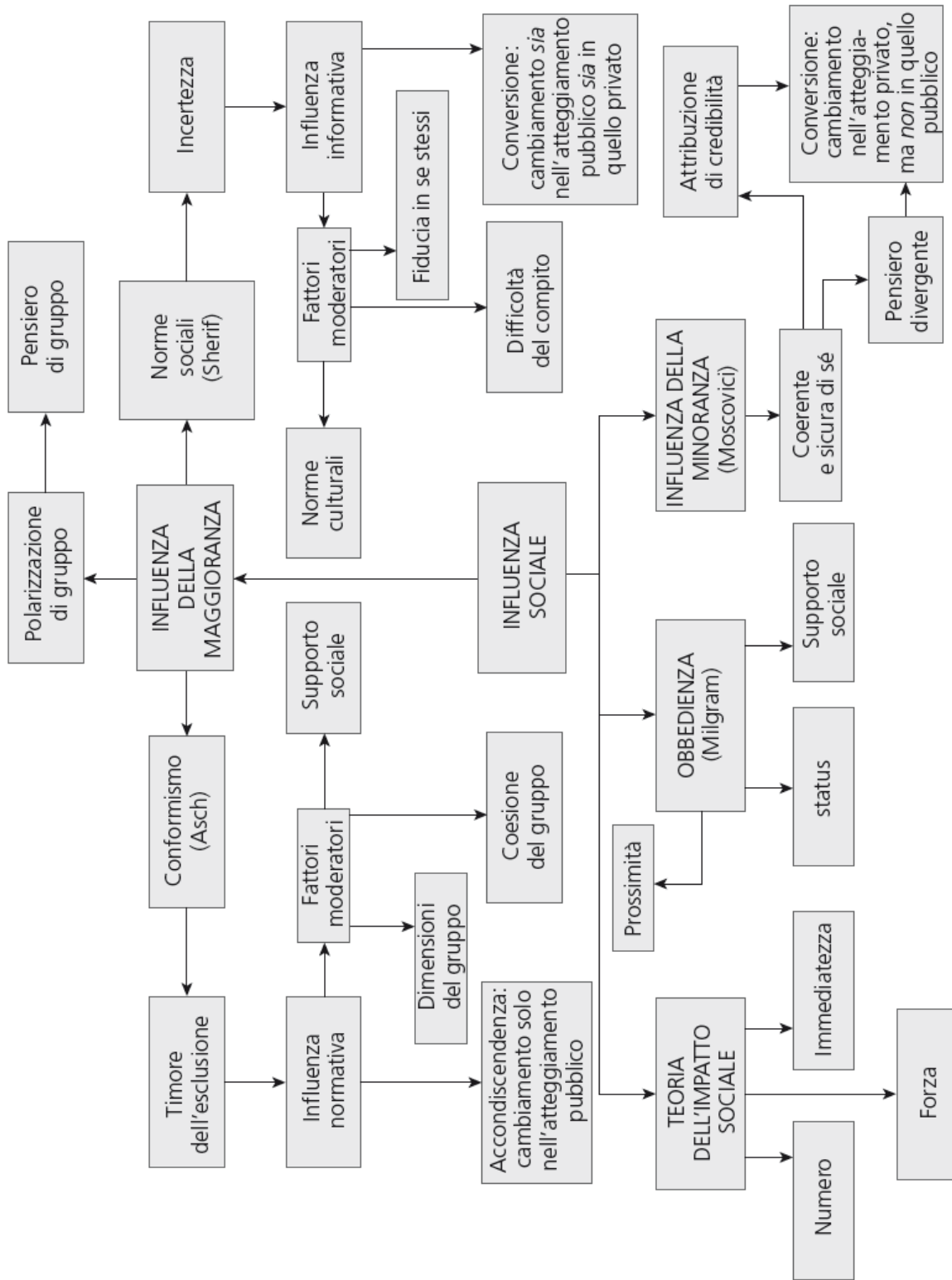




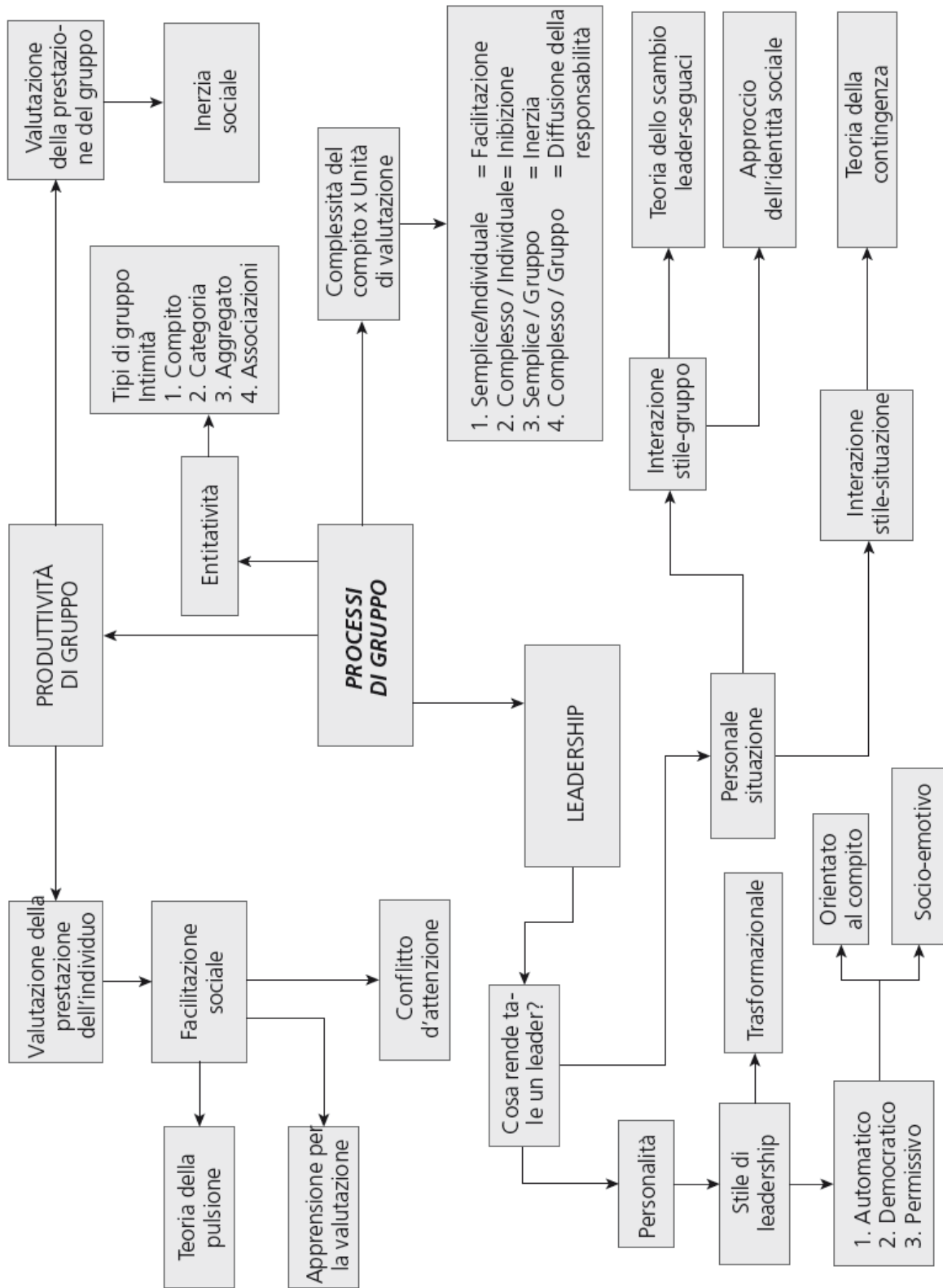
CAPITOLO 9 – AMICIZIA E AMORE  
MAPPA MENTALE



CAPITOLO 10 – INFLUENZA SOCIALE  
MAPPA MENTALE

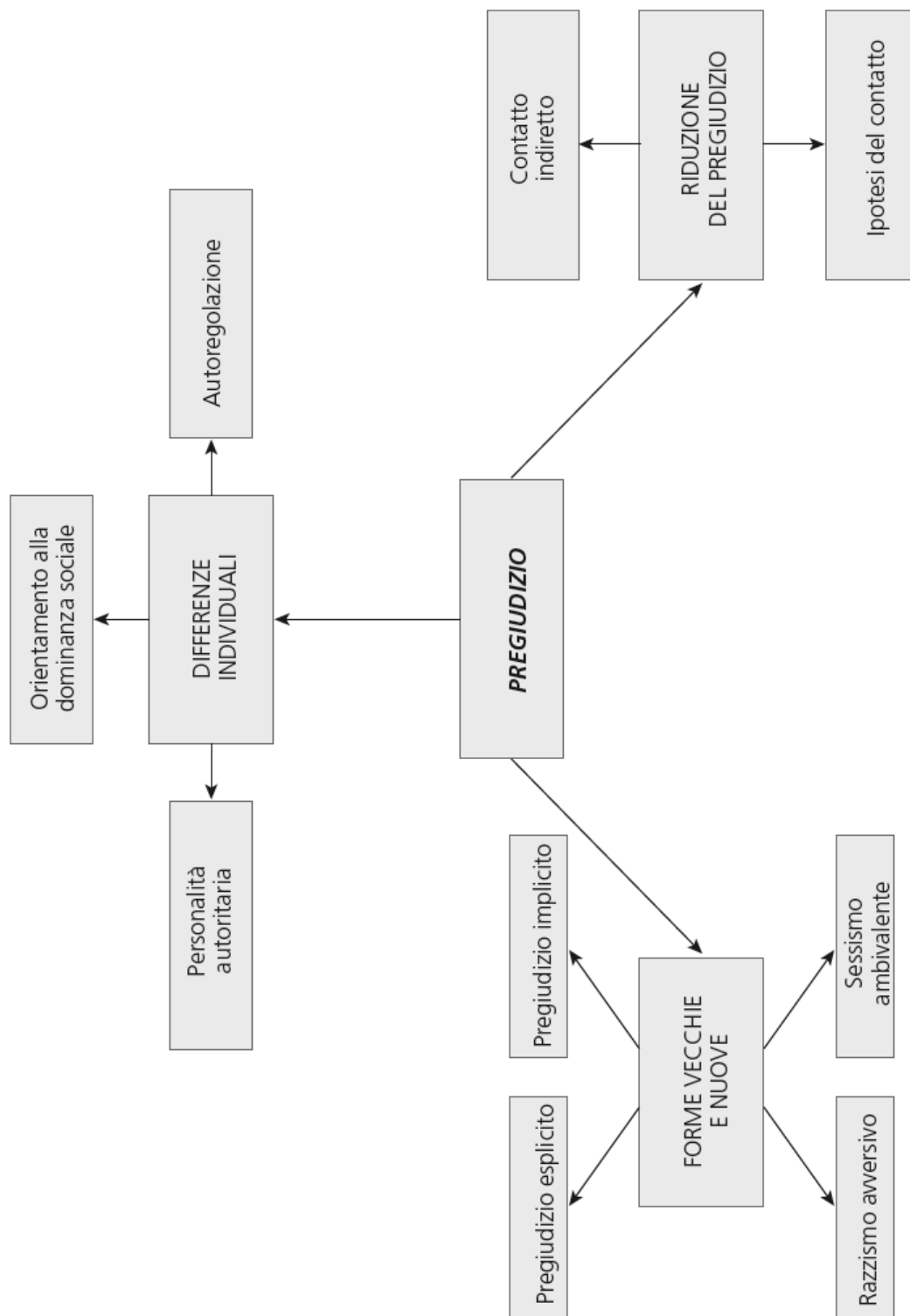


CAPITOLO 11 – PROCESSI DI GRUPPO  
MAPPA MENTALE



# CAPITOLO 12 – IL PREGIUDIZIO

## MAPPA MENTALE



CAPITOLO 13 – LE RELAZIONI INTERGRUPPI  
MAPPA MENTALE

